



IIM Newsletter March 2020

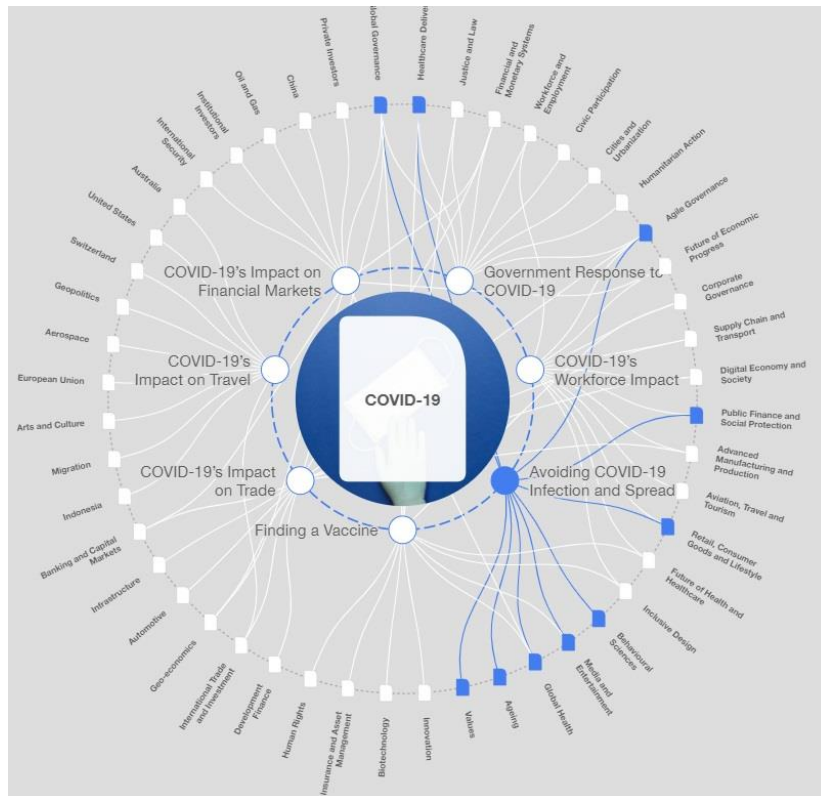
COVID-19 Strategic Intelligence



Vladimir Videnovic

Institute for Information Management

IIM Newsletter March 2020: COVID-19 Strategic Intelligence



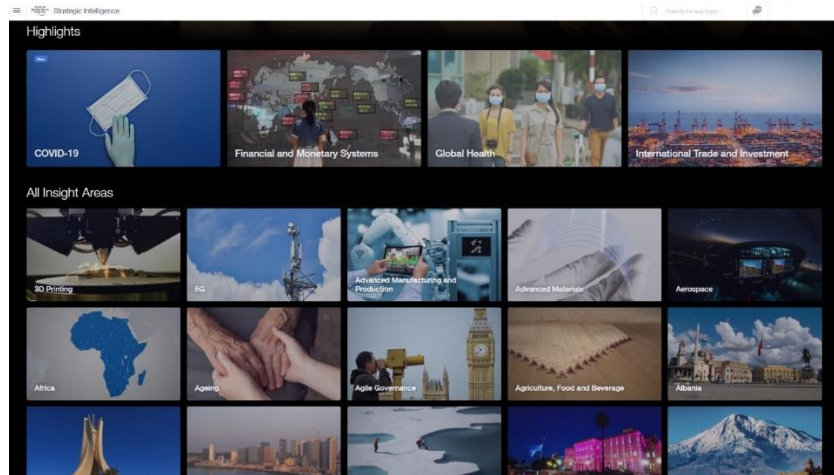
We all have been constantly bombarded with news and information related to the Novel Coronavirus outbreak. One of the most comprehensive sources of detailed information about various aspects of the COVID-19 outbreak and its global impacts is effectively presented by the Strategic Intelligence, which provides strategic insights and contextual intelligence from the World Economic Forum that explore and monitor various global issues, including COVID-19 pandemic.

Today we live in a complex world interconnected through communications, technology, travel, trade, culture, markets, economy, events and people.

The **World Economic Forum** (WEF) is one of the unique organisations that provide platform where businesses, governments and society members work together to address critical global issues. WEF is an international organisation for Public-Private Cooperation established in 1971 as a not-for-profit foundation. It provides a trusted media for informed collaboration and cooperation between various interested parties and public.

World Economic Forum's Strategic Intelligence topics

<https://intelligence.weforum.org/>



WEF publishes Transformation Maps, which cover 125 topic areas and synthesise the WEF network's collective intelligence are developed with leading universities, think-tanks and international organisations, including Australian National University, China Europe International Business School, the Kennedy School of Government at Harvard University, Institut Montaigne, Korea Advanced Institute of Science and Technology, Massachusetts Institute of Technology, University of Oxford, Yale University, the University of Cape Town, the Inter-American Development Bank, the International Organization for Migration, the Smithsonian Institution and the World Resources Institute, among others.



The WEF's Transformation Map for COVID-19 is a real-time repository of knowledge about the COVID-19 outbreak. Transformation Maps are the WEF's dynamic knowledge tool designed to assist consumers to explore and make sense of the complex and interlinked forces that are transforming economies, industries and global issues. They present insights derived by experts along with machine-curated content. Transformation maps allow users to visualise and gain detailed understanding of a range of interconnected topics and the connections and inter-dependencies between them, helping in turn to support more informed decision-making. They provide a single place for information consumers to understand each topic from multiple perspectives. Each of the maps has a feed with the latest research and analysis drawn from leading research institutions and media outlets around the world.

The screenshot displays the WEF Strategic Intelligence interface for COVID-19. On the left, a circular transformation map is centered on 'COVID-19'. This map is divided into four main quadrants: 'Government Response to COVID-19' (top), 'COVID-19's Impact on Financial Markets' (left), 'COVID-19's Impact on Travel' (bottom-left), and 'COVID-19's Impact on Trade' (bottom-left). Each quadrant is further subdivided into numerous related topics, such as 'Healthcare Delivery', 'Digital Economy and Society', 'Aviation, Travel and Tourism', and 'Public Finance and Social Protection'. The map is interconnected with a network of lines, illustrating the complex web of influences. On the right side of the dashboard, there is a 'GLOBAL ISSUE COVID-19' header with a background image of a surgical mask. Below this, a news article snippet is visible, followed by a 'Publications' section listing various articles and reports with their respective authors and dates.

The WEF’s Transformation Maps cover issues that are relevant to the people and organisations WEF works with, exploring topics of global importance that require leaders from across different sectors to work together.

The WEF curators identify and explain the key trends or drivers of change for a particular topic, drawing on their expertise and the latest research in their field, as well as the insights from various WEF activities and communities. They explore how the key trends affecting their subject are in turn affected by other Transformation Map topics – covering industries, countries, regions and global issues. The curators create a record of the connections and inter-dependencies between the different topics. These relationships are clearly represented in the information visualisations and complementing texts, enabling a greater understanding of the complex web of influences that surround each individual topic.